



中原大學

Chung Yuan Christian University

2024 Spring Semester Master/Ph.D. Newly Admitted Students Handbook

Through an academic foundation and a holistic education process, aiming to cultivate individuals with character, expertise, creativity, and a global perspective.



contents

- 01 Dear CYCU Graduate student**
- 02 The Model of Holistic Education**
- 04 Information for New Students**
- 05 Notice for Dormitory Application**
- 06 Data Entry Area**
- 08 Tuition and Miscellaneous Fees**
- 09 Course Selection and Credits Waiver**
- 10 Student Health Examination**
- 11 Our Grant**
- 12 A different kind of CYCU**
- 15 CYCU Calendar for
Academic Year 2024**
- 16 Life and Transportation**
- 17 Campus Maps**

Message from the President

Dear CYCU Graduate student

Congratulations and welcome to the CYCU graduate program! Your brilliant performance has stood out in the cutthroat competition to enter our graduate programs, and we applaud you for the wise choice of choosing CYCU.

Since CYCU's establishment in 1955, we have endeavored to promote higher education for the benefit of the people with faith, hope, love, and in the spirit of Christian love for the world. We firmly believe that education is not only an approach to exploring knowledge and technique but also the process of shaping one's character and searching for the meaning of our own life. Everyone is endowed with different talents and has different personalities, abilities, and circumstances, therefore, to realize one's full potential is considered a success.

You must be eagerly looking forward to delving deeper and more professionally into your studies and research. As the President of CYCU, I am honored to tell you that your journey here will undoubtedly be filled with rich rewards and achievements.

In recent years, the operation of CYCU has won many awards, including a 100% freshmen enrollment rate for the 3rd consecutive year, being ranked No.1 in the national and private university for 5th consecutive year (2018-2022 academic year), being ranked top in private comprehensive universities for the 7th consecutive year, and took the first place in private universities retention rate. Regarding academic achievements, CYCU was named the Favorite University for Business and the Corporate Favorite University Student by 1111 Job Bank and Global Views. CYCU also ranked first in graduates' employment rate and high salary for bachelor alumni by 104 Corporation.

In addition, CYCU was awarded the National Sustainable in Education Awards by the Executive Yuan in 2022. In 2023, the Times Higher



Education (THE) published the World University Rankings, CYCU ranked 5th in science and 6th in engineering, and the performance is the top among private universities. In the 2023 U.S. News & World Report, CYCU surpassed the nation's top universities and took the lead in the field of chemical and polymer science. These honors show that CYCU has a significant presence in the international academic community. In the future, CYCU which actively constructs a base for nurturing innovative talents encompassing industries, academia, research, and creative fields, aims to cultivate a new generation of talent possessing character, professionalism, and international mobility skills continuously.

We encourage you to make the most of the life experiences shared by your mentors while studying at CYCU, and put in great effort and wisdom along the way. With true dedication to your studies and with a sense of commitment and responsibility to yourself, you will undoubtedly achieve outstanding accomplishments and steadily progress towards the goal of your dreams.

Yours sincerely,

In-Ming Lee

January, 2024



A model of holistic education



The top-ranked university in the world, surpassing the national top university

- ★ Ranked No. 1 private comprehensive university for the 6th consecutive year in the Center for World University Rankings (CWUR)
- ★ Ranked No.1 in chemical and polymer science in the nation in U.S. News 《U.S. News》
- ★ Ranked 5th in science and 6th in engineering in the Times Higher Education (THE) World University Rankings



CYCU came out among the top university in academic influence, surpassing national top university

- ★ The model of Category Normalized Citation Impact (CNCI) in 2021
- ★ Ranked 2nd in private comprehensive university in all fields of Essential Science Indicators (ESI)
- ★ Ranked No.1 private comprehensive university in the field of chemistry and materials science
- ★ Ranked 2nd private comprehensive university in physics
- ★ Ranked 3rd private comprehensive university in the field of engineering



No. 1 private school in the industry-academia partnership, comparable to national universities

- ★ Awarded the Industry-Academia Partnership Award by the Chinese Institute of Engineers for the 7th consecutive time
- ★ Awarded the Outstanding Creative Institution by the Small and Medium Enterprise Administration (MOEA) for 12 times
- ★ The only university in Taiwan awarded International Creative Institution by the Ministry of Economic Affairs



Named as the favorite university for businesses

- ★ CYCU is named the Favorite University for Business and ranked first in private universities by 1111 Job Bank for the 3rd consecutive year
- ★ Named as the Corporate Favorite University Student and ranked first in the private universities by Global Views



CYCU is Trustworthy by Students and Parents Quality University with Faith, Hope, and Love



The university with the highest enrollment rate and retention rate

- ★ 100% enrollment rate of freshmen for the 2022 academic year and 100% enrollment rate for the 3rd consecutive year
- ★ Ranked No.1 in national and private comprehensive universities in the nation for the 5th consecutive year
- ★ Ranked No.1 in private comprehensive universities for the 7th consecutive year
- ★ Ranked No.1 for University Distribution Admissions in private comprehensive universities in 2022 academic year
- ★ Ranked 3rd in the nation and No.1 in private schools for the undergraduate retention rate in 2022 academic year



The highest financial subsidy in Higher Education SPROUT Project for private university

- ★ Received the first prize for the Funding Direction Regarding the Development Plan for Private Universities for the seventh consecutive year, breaking the university record in the nation
- ★ The highest financial subsidy in MOE Higher Education SPROUT Project for private comprehensive universities in 2023



No.1 private school in employment rate and high salaries for alumni

- ★ 104 Corporation ranked CYCU as the No.1 private comprehensive university in the employment rate of graduates
- ★ 104 Corporation ranked CYCU as the private comprehensive university with the highest percentage of alumni salaries above \$80,000



No. 1 friendly and sustainable campus in the nation

- ★ Awarded the National Sustainable Development Awards by the Executive Yuan
- ★ CYCU ranked No.1 in QS World University Rankings: Sustainability 2023
- ★ Awarded the 108th annual Friendly Campus Award and University with Characteristics of Life Education by the Ministry of Education
- ★ 2009, 2014, and 2019 awarded Friendly Campus Award for three consecutive times, breaking the national record

1.Information for New Students

Student ID



Please scan the QR Code on the right for the student ID or more information.

iTouch for Freshmen

<https://fm.cycu.edu.tw/> Learn more about CYCU and complete all the information.

iTouch <https://www.cycu.edu.tw/> → I-TOUCH

1.Open an Account:

The account number is the student number, and the password is preset to 8 codes for the birthday of the West. (Example: 20020102) Please reset the password after login. The password is valid for six months, and would be reset if the password is not modified within six months.



2.Connect Account and Password with Cellphone:

CYCU Website/I-TOUCH/Personal Information/Account Security Settings

3.Function Description:

Students can access personal information, for example, basic personal registration, courses, course selection, exams, grades, leave of absence, etc.

Self-checklist

Dormitory Application

Student Housing Division #2191
1/11-1/30

Completing Data Entry Area

Discipline Division #2113
Open in 2/1

Dormitory Check-in

Student Housing Division #2191
2/17 12:00pm-2/18

Paying for Tuition and Miscellaneous Fees

Cashier Division #2224
1/11-2/14

Applying for Student ID Cards

Registration and Curriculum Division #1178
2/1-2/4 before 17:00 pm

Courses Selection

Please contact each department's office
2/19-2/26

Credit Waiver

Registration and Curriculum Division #2026
1/11-2/21

Student Health Examination

Health and Hygiene Division #2162
2/1-3/10

TEL (03)265+extension number

2. Notice for Dormitory Application

Dormitory Application

Student Housing division 03-2652191 Ms. Yu

Application time | January 11th - January 30th

1. Please scan the QR Code to apply for the dormitory before the deadline.
2. Draw lots time: Manual drawing lots by January 31st, 2024.

Announce the approved dormitory list at noon on January 31st, 2024.

*Enquiry: CYCU Website → I-TOUCH → Administrative Proclamation →
Announcement of Approved Dormitory List



Dormitory Check-in Time | From noon on February 17th until 5:00 PM on February 18th.



3.Data Entry Area

1 Go to the Website and Fill out the Data



Beginning on February 1st <https://fm.cycu.edu.tw/>

STEP 1 | Data Entry Area



STEP 2 | Log in



★ The account number is the student number, and the password is preset to 8 codes for the birthday of the West.

STEP 3 | The Data Completion Form

Teacher's words
Contact
 Please click each step below to fill in.

The "Summary Table" is a required information for new students. After filling in, please confirm whether the status of each item is "green tick" ✓. If you have any questions, please call the case office and ask.

State	Item	Case Office	Schedule
✗	Living Data Sheet	Student Advising Division 03-2652113	
✗	Application for Student ID Card	Curriculum and Registration Division 03-2651178	
✗	Application for Financial Account	Cashier's Office 03-2652222	
✗	Upload Autobiography	Student Advising Division 03-2652124	
✗	Setup of External Email	Office of Information Technology 03-2651999	
✗	Health Information	Health Services Division 03-2652162	
✗	Student Life Attitudes Survey	Chaplain's Office 03-2652603	

The freshmen need to complete all the forms in the Data Completion Form and make sure each section is complete. Feel free to contact the responsible division if there is any question.

2 Completing All the Information in the Data Entry Area

Student personal information in the Data Entry Area is collected for the purpose of contacting students. Student personal information will only be used in school administration and activities. Please follow the description in iTouch for freshmen to fill out and update the information in the Data Entry Area.

The information includes Life Information Sheet, Dormitory Application, Student ID Application, etc.

★ In order to defend personal rights, please make sure the information is correct and complete before submission.

The screenshot shows a web interface for the CYCU freshman data filling system. At the top right, it displays 'Operating time : 27:42.' and buttons for 'Retime' and 'Logout'. On the left side, there is a green sidebar menu with buttons for 'Help', 'Teacher's words', 'Contact', and 'Logout'. Below these are eight numbered steps: 1. Living Data Sheet, 2. Application for Student ID Card, 3. Application for Financial Account, 4. Upload Autobiography, 5. Setup of External Email, 6. Health Information, 7. Student Life Attitudes Survey, and 8. Summary Table. The main content area has a blue header 'Fill in the operating instructions' and a yellow box with a cartoon character pointing to the text: 'Welcome to use the CYCU freshman data filling system. The information will be used as the report and basis for the registration of your school registration information during the school year. Please be sure to fill it out. If you have any questions, please contact the organizer. ~~~~The information you fill in will be protected by relevant laws and regulations.~~~~'. Below this is a section titled 'Homepage Notes:' with two numbered points: 1. In the life information form: Clicking the "Save" button only stores the data in the temporary database, and you can still modify it within the specified period. If you click the "Confirm and Send" button, it means you have completed filling out the form and confirmed that all the information will no longer be modified. Please double-check before clicking "Confirm and Send". 2. The system has a time limit of 30 minutes for filling out the form. If the time is exceeded, the system will automatically log out. If you haven't completed filling out the form, you can either log in again or click "Restart Timer".

Student ID Application Registration and Curriculum Division 03-2651178 Ms. Huang

Uploading English name and headshot *File format: 2M or less clear image file (*.jpg)

★ Students who completed the application before 17:00 on February 4th (Sun), claim their student ID card at the department office on February 19th (Mon); otherwise, students may not receive the card until March.

4. Tuition and Miscellaneous Fees

1 Instructions for Paying Tuition and Fees

03-2652224 Ms. Shen

Download method for registration bill (includes payment certificate): scan the QR Code on the right side.

★ Log in the Tuition and Fees Area to check the charge standard.



2 Payment Deadline

Finish paying tuition and fees from January 11th, 2024, to February 14th, 2024.

(After February 14th, Substitute Students must complete the tuition and miscellaneous fee payment by February 19th.)

Students applying for dormitories should download the payment slip and pay by themselves **after 15:00 on February 1st, 2024.**

★ Tuition and fee waivers and student loan borrowers shall download and pay the balance bill.



3 Deadline for Supplementary Payment of Tuition and Fees

03-2652022 Ms. Tien

Paying supplementary tuition and fees can use the following payment methods before February 26, 2024. When payment is overdue, the admission qualification shall be revoked.

4 Payment Methods

03-2652224 Ms. Shen

1. Online payment: credit card (i-payment platform), Taiwan Pay, ATM (please choose the payment function)

2. Paying at a bank counter: Mega International Commercial Bank, other financial institutions, or the big four convenience stores (payment limitation: NT\$ 60000)

★ Payment method details are recorded in the 112-2 Tuition Fees Announcement.

Freshmen handle the suspension of schooling

03-2651180 Ms. Huang

1. Can Handle Without payment. 2. Shall finish online applications before February 19, 2024.

★ **Route** CYCU homepage/I-TOUCH/Academic affairs office/Curriculum and Registration Division Administration & Services Center/"Application for Suspension/Resumption/Withdrawal of Study" or scan the QR Code



5.Course Selection and Credits Waiver

Course Selection

03-2652034 Ms. Chiang 03-2652035 Mr. Zheng

If the required subjects of the graduate school where the student belongs have not been added automatically, please contact the department office to add them. For General Education courses and Elective courses, please go to the Course Selection System to proceed by yourself.

★ **Route** [CYCU home page](#) → [I-TOUCH](#) → [course selection system](#) →
[enter student number and password](#)

Stage II | Ends at 8:00 A.M. on February 26. (For all students)

Common/ Teacher Education Program Courses: Allowed from February 19 to February 21, 10:00 p.m. to 8:00 a.m. each day.

General Education/ PE/ Military Training Courses: Allowed from February 21 to February 23, 10:00 p.m. to 8:00 a.m. each day.

All Courses: Allowed from 10:00 P.M. February 23 to 8:00 A.M. February 26. During the weekend, system will open the whole day.

★ [Definition of course classification and instructions of inquiry mode can be inquired at the Bulletin Board/System Instructions on the course selection system.](#)

Course Selection results

During the course selection period, students shall check the “Class Schedule” on the course selection system. At the end of the course selection, students shall check the “Course Selection Information Inquiry” on i-touch.

★ **Route** [CYCU home page](#) → [I-TOUCH](#) → [User log-in](#) → [Study](#) → [Teaching website](#)
→ [Convenience learning](#) → [Course selection information inquiry](#)

Credits Waiver Starts from January 11 to February 21

03-2652026 Ms. Chan

★ During the course selection period after the start of the semester, you can withdraw from the approved courses online on the Course Selection System by yourself.

★ **Route** [CYCU homepage](#) → [Log into I-TOUCH](#) → [Study](#) → [Course Selection information](#) →
[Credits waiver application system](#)

Graduate students may apply for exemption from General Education courses based on the CYCU Regulations for the exemption of General Education

★ **Route** [chrome-https://reurl.cc/bl0ge6](https://reurl.cc/bl0ge6)

6. Student Health Examination

Physical Check-up for Students

Health Care Section 03-2652162 Ms. Huang

1. Object: New students in 112-2nd semester include returning students, exchange students, and transfer students.

2. Fee: NTD 600/person

3. Date: 2024.02.01-2024.03.10

4. Venue: Chi Hsin Clinic or Ten-Chan General Hospital (Chung-Li)

5. Items:

- (1) **Physical examination** : Height, Weight, Vision, Waistline, Blood Pressure, Eyes, ENT, Head & Neck, Chest, Abdomen, Spine &limbs, Skin, and Oral Health Screening.
- (2) **Blood test** : Blood Routine, SGOT, SGPT, Total cholesterol, Creatinine, and UA.
- (3) **Urinalysis** : Protein, Sugar, O.B., and pH.
- (4) **Chest X-ray**

6. Please pay attention to the following points:

- (1) Log in your i-touch account and ensure that you have completed the Student Health Examination Form of CYCU [before February 19, 2024](#).
- (2) Please complete the health exam within the designated date; only cash payments will be accepted on-site after the health exam.
- (3) Remember not to have an empty stomach before the health examination. Also, avoid staying up later or engaging in intense exercise before the health exam to prevent any potential impact on the accuracy of the report.
- (4) Please wear a mask throughout the entire process. If you feel unwell, are menstruating, or are pregnant, kindly inform the medical staff beforehand.
- (5) You may check your health examination report on Chi Hsin Clinic website after the examination for approximately 40 days by scanning the "Student Health Examination record."
- (6) Depend on regulations of Ministry of Education, all students in CYCU must cooperate the health exam, Pertaining to refusing to comply the regulations, the public may increase risks of serious illness, or may be involved in improper consequence.

7. Chi Hsin Clinic:

Address : 5F, No. 42, Sec. 3, Jianguo N. Rd., Taipei City 104, Taiwan

Telephone Number : (02)2507-0723 \ (02)7709-1119

Service Time : Mon.to Sat. 8:00-11:00 13:00-16:30

8. Physical examination center of Ten-Chan General Hospital (Chung-Li):

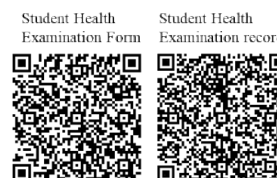
Address : No 155, Yen-Peng Rd, Chung-Li City, Tao-Yuan County, Taiwan

Telephone Number : (03)4629292#22000 or 22813

Service Time : Mon.to Fri. 8:00-11:00 13:30-16:00 (except Tuesday, Thursday and Saturday)

9. Contact us if you have any questions:

Health Services Division of CYCU 03-2652162 /1F, Holistic Education Village



7.Our Grants

Scholarships

1. Off-campus Scholarships 2. Internal Scholarships

- ★ For more information, please go to the Office of Student Affairs website
→ <https://oosa.cycu.edu.tw/en/latest-news-2/>



Easy information at CYCU

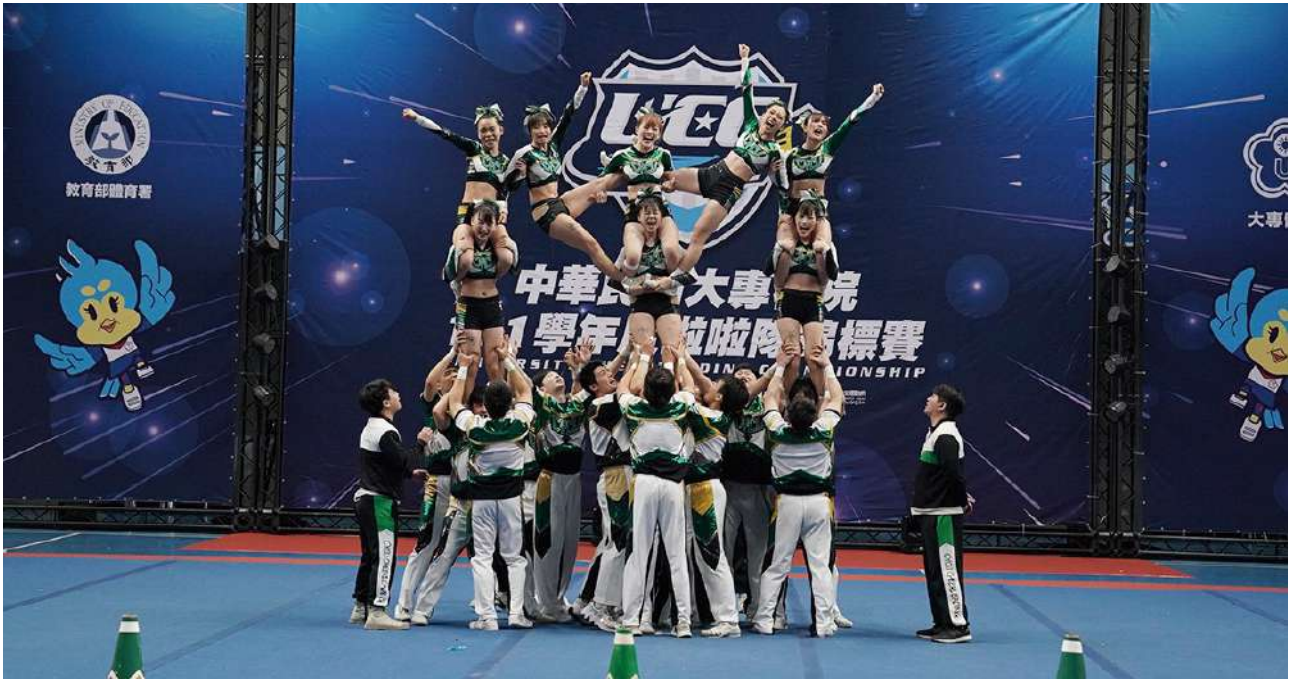
Certificates of enrollment Inquire & Download online

1. Path: Log in to itouch/personal information/student profile/Academic records;
Log in to itouch/Study/Learning Footprint/Academic records.
2. The certificate of enrollment has already been stamped online. If the certificate needs the official stamp, please print it yourself and go to the Administration & Service Center at Dickson Lee 1F.

The transcript of academic record Inquire & Download online

1. Path: Log in to itouch/personal information/student profile/Academic records;
Log in to itouch/Study/Learning Footprint/Academic records.
2. When requesting an official school stamp on the transcript of Academic records, please print it yourself and go to the Administration and Services Center at 1F of Dickson Lee Hall.
3. "The transcript of academic record" will not be sent a hard copy.

8.A different kind of CYCU



The Wonderful Youth
is Right Here



GENERAL EDUCATION

The scope of the general education complements and reflects that of general education courses and includes literature, music, art, dance, drama, film, philosophy, marriage, dating, relationships, etc.



FESTIVAL ACTIVITIES

Every year, the school organizes a lighting event on Thanksgiving Day, inviting everyone to celebrate the Christmas festivities. Fireworks are set off during the New Year's Eve countdown to celebrate the arrival of the New Year. Through the Mother's Day Choir Competition, we express our love and gratitude to our mothers through song and creativity.



CYCU Art Salon

In order to promote the value of holistic education and to enhance the form of the personality of truth, goodness, and beauty, Chung Yuan University organizes concerts on Wednesdays and Thursdays during the semester, inviting renowned musicians and performing arts groups from home and abroad to perform.



Art Center

In view of the inseparable relationship between aesthetic education and personality development, and the importance of arts education to our students, we set up the Art Center in August 2005 to plan and implement arts exhibitions and arts education activities on campus. Each academic year, we present six to eight visual arts exhibitions with a wide variety of themes and media and organize experience workshops to match the themes and creative media. Students who are interested in art are welcome to visit and register for the workshops.



9.CYCU Calendar for Academic Year 2024

02 FEB	日	一	二	三	四	五	六
					1	2	3
	4	5	6	7	8	9	10
	11	12	13	14	15	16	17
	18	19	20	21	22	23	24
	25	26	27	28	29		

- 01 Beginning of the 2nd semester
- 07 Dormitory for the winter term closes at 10:00
- 09 Chinese New Year's Eve
- 10 - 12 Chinese New Year holiday
(Please refer to the governmental announcement for an actual date.)
- 12 Beginning of Inter-university courses registration (Non-CYCU students)
- 14 Tuition & fees Payment Deadlines (For freshmen, please refer to the announcement of New Student Handbook) / End of application of tuition exemption and loan
- 16 End day of Winter Vacation
- 17 Dormitory for winter term closes at 10:00
- 19 First day of school / Classes begin
- 21 Deadline for Make-up Exams for Fall Semester, 2023
- 22 End of Inter-university courses registration (CYCU students and Non-CYCU students)
- 27 Beginning of Students' dormitory application for the Academic Year 2024-2025
- 28 Peace Memorial Day (Holiday)

05 MAY	日	一	二	三	四	五	六
				1	2	3	4
	5	6	7	8	9	10	11
	12	13	14	15	16	17	18
	19	20	21	22	23	24	25
	26	27	28	29	30	31	

- 03 End of application for Teacher's education screening
- 08 End of application for double major / Minor Department / Interdisciplinary programs / Professional programs / Micro Program
- 12 Mother's day
- 15 2nd Joint Calculus exam
- 19 End of Teaching evaluation for Graduating classes
- 20 Beginning of Teaching evaluation for non-Graduating classes / First day to submit grades of the graduating classes
- 24 End of courses withdrawal applications for non-Graduating classes
- 20 - 24 Graduates' Final Exams
- 29 Senior's Joint English Post-Exam

03 MAR	日	一	二	三	四	五	六
						1	2
	3	4	5	6	7	8	9
	10	11	12	13	14	15	16
	17	18	19	20	21	22	23
	24	25	26	27	28	29	30
	31						

- 01 Beginning of Department transfer application
- 04 Environment service learning
- 07 End of Students' dormitory application for Academic Year 2024-2025
- 13 1st Joint Calculus Examination / Dormitory Draw for Academic Year 2024-2025 / Rehearsal for sports meeting
- 18 End of Department transfer application
- 19 - 20 Sports Meeting (No Classes; Offices open)
- 20 - 21 the Academic year 2024-2025 University examination of Disabled students site layout & classroom for check
- 22 - 25 the Academic year 2024-2025 University examination of Disabled students
- 27 Beginning of preliminary Graduate student application / Beginning of application for double major / Minor Department / Interdisciplinary programs / Professional programs / Micro Program
- 29 Good Friday
- 31 Easter day

06 JUN	日	一	二	三	四	五	六
							1
	2	3	4	5	6	7	8
	9	10	11	12	13	14	15
	16	17	18	19	20	21	22
	23	24	25	26	27	28	29
	30						

- 2 Last day to submit grades of the graduating classes
- 5 Deadline of Make-up Exam for the Graduates' Final Exam
- 7 Rehearsal for Graduation ceremony
- 8 Graduation ceremony (Office open)
- 10 Dragon Boat Festival (Holiday)
- 14 Classes over/End of suspension application
- 16 End of Teaching evaluations for non-Graduating classes
- 17 First day to submit grades for all students
- 17 - 21 Final Exams
- 23 End of term stay in Student's dormitory (at noon)
- 24 First day of Summer Vacation (until the end of August 2024)
- 24 Dormitory for summer term open at 10:00
- 30 Deadline for Faculty to Submit Grade

04 APR	日	一	二	三	四	五	六
		1	2	3	4	5	6
	7	8	9	10	11	12	13
	14	15	16	17	18	19	20
	21	22	23	24	25	26	27
	28	29	30				

- 01 Beginning of Degree exam application for Graduate Students
- 04 Children's Day / Tomb-sweeping Day (Holiday)
- 05 A make-up holiday (Children's Day / Tomb-sweeping Day) (Holiday)
- 15 Beginning of courses withdrawal application for the Graduating classes
- 15 - 19 Mid-term Exams
- 17 The University Affairs Meeting
- 22 Beginning of courses withdrawal application for non-Graduating classes / Beginning of application for Teacher's education screening
- 26 End courses withdrawal application for the graduating classes / End of Degree exam application for Graduate students/End of preliminary Graduate student application
- 29 Beginning of Teaching evaluation for Graduating classes

07 JUL	日	一	二	三	四	五	六
		1	2	3	4	5	6
	7	8	9	10	11	12	13
	14	15	16	17	18	19	20
	21	22	23	24	25	26	27
	28	29	30	31			

- 3 Deadline for Make-up Exams for Graduates' who take those low grade courses
- 10 Beginning of online application for the dormitory of Freshmen (the 1st batch)
- 21 Deadline for online application for the dormitory of Freshmen (the 1st batch)
- 23 Announcement the Academic year 2024-2025: the approved list of dormitories for Freshmen at noon (the 1st batch)
- 31 End of the 2nd semester

10. Life and Transportation

Chung Yuan Christian University is close to the Zhongli district, near the train station and the high speed rail station, and is surrounded by excellent living facilities. In addition to the famous Chung Yuan Night Market, there are many brunch shops, mass merchants, cosmetics shops, clothing shops, stationery shops, optical shops, clinics, etc., all of which are convenient for food, clothing, housing and transportation.

Mailing Address

Please include your dormitory number when sending to the dormitory

School Address : 200 Chung Pei Road, Chung Li District, Taoyuan City, Taiwan 320314, R.O.C.

Li Hsing Hall (Men's Dormitory):No. 291, Xinzhong N. Rd., Zhongli Dist., Taoyuan City 320314, Taiwan (R.O.C.)

Hsin Shih Hall:No. 210, Puzhong Rd., Zhongli Dist., Taoyuan City 320314, Taiwan (R.O.C.)

En Tzu Hall (Women's Dormitory):No. 200, Zhongbei Rd., Zhongli Dist., Taoyuan City 320314, Taiwan (R.O.C.)

Lian Shan Hall (Women's Dormitory):No. 200, Zhongbei Rd., Zhongli Dist., Taoyuan City 320314, Taiwan (R.O.C.)

Re Cheng Hall (Women's Dormitory):No. 202, Puzhong Rd., Zhongli Dist., Taoyuan City 320314, Taiwan (R.O.C.)

Re Cheng Hall (Men's Dormitory):No. 206, Puzhong Rd., Zhongli Dist., Taoyuan City 320314, Taiwan (R.O.C.)

Mail to Campus Pickup

For the rest, please contact the security desk of each dormitory directly

Place:Please bring your student ID card to the Post Office, Room 106, 1st floor of the Dickson Lee Hall. If you need to collect it on behalf of the student, please bring the photo identification of the representative and the person to be collected.

Announcement:Registered mail and parcels should be picked up within 14 days (including holidays) from the announcement date, after which they will be returned. There are announcements on the bulletin board, in front of each department office, and in the dormitories. Students can also check it online.

Ways to School

1. THSR Station:Take exit 5 from the 1st floor lobby of THSR Taoyuan station, go to bus platform 5 and take THSR express bus - 170 THSR Taoyuan station - Zhongli. About 20~30 minutes per train, and it takes 20 minutes to reach Zhongli city. Get off at Zhongli Main Station and take a bus to Chung Yuan Christian University.

2. Taoyuan Bus: Walk to Taoyuan Bus Terminal and take 155 or 156 to Chung Yuan University.

3. Zhongli Bus: Walk to Chungli Bus Terminal and take 167 to Chung Yuan University.

4. Kuo-Guang Bus: [1818A] (Every Monday to Friday)

No service during winter and summer vacation and holidays:

1. Taipei Station North Gate 1 - Chung Yuan University 07:30, 08:00, 14:30, 15:30, 16:30

2. Chung Yuan University - Taipei Station North Gate 1 12:20, 14:20, 16:20, 17:20, 18:10

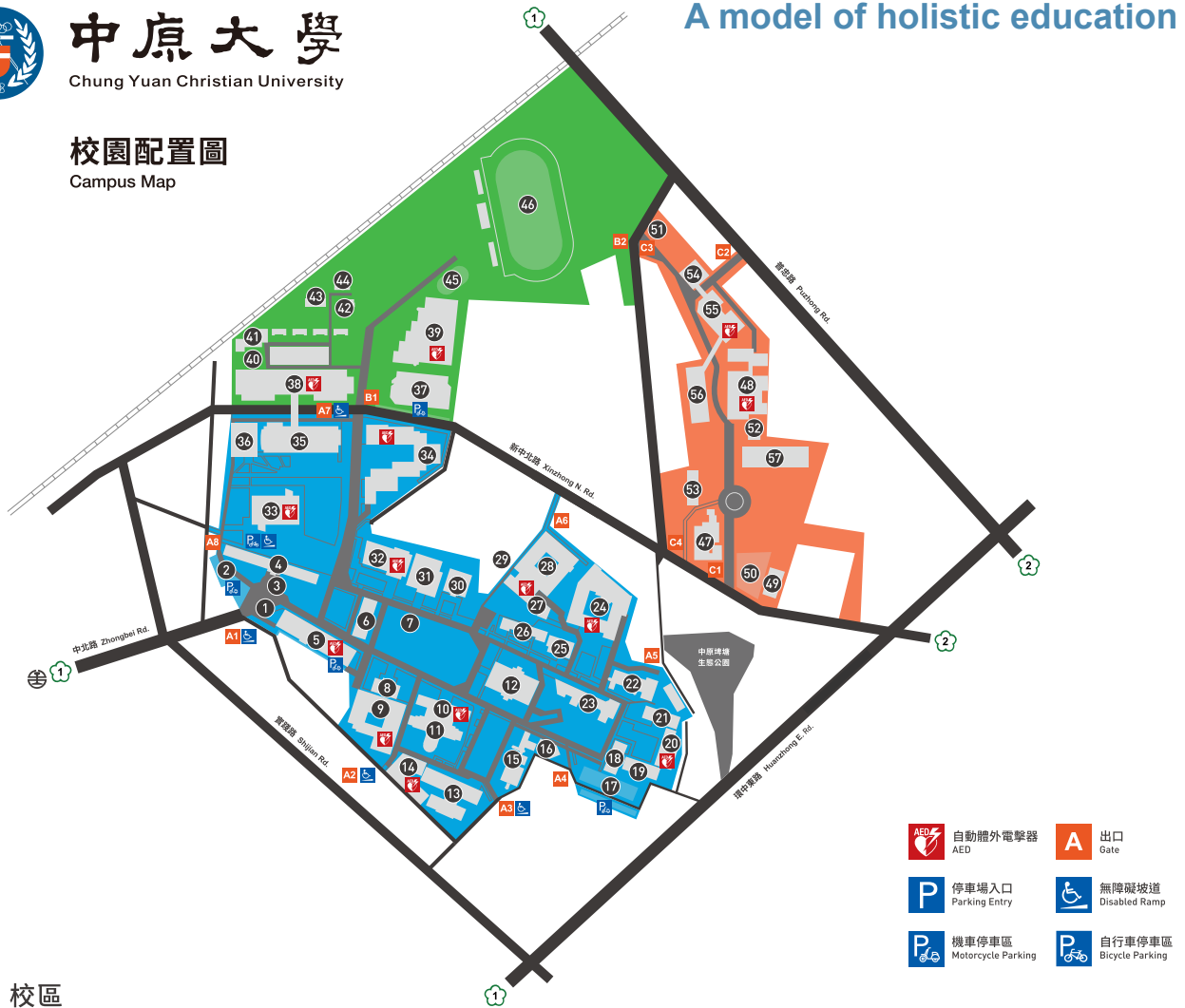
5. Self-driving: Please scan the QR CODE on the right.

Google Map





校園配置圖
Campus Map



A 校區
Campus

- | | | | |
|------------------------|--------------------------|--------------------------------|-----------------------------------|
| ① Main Gate | ⑩ Tu Hsin Hall | ⑲ Landscape Architecture Bldg. | ⑳ Tzu Chiang Bldg. |
| ② Old Gate | ⑪ E.E. & C.S. Bldg. | ⑳ Wang Hall | ㉑ Grace & Mercy Baptist Church |
| ③ Fountain Square | ⑫ Chung Cheng Hall | ㉒ Interior Design Bldg. | ㉒ Chemistry Bldg. |
| ④ Huai En Hall | ⑬ En Tzu Hall | ㉓ Civil Engineering Bldg. | ㉓ Science Bldg. I |
| ⑤ Dickson Lee Hall | ⑭ Lian Shan Hall | ㉔ Chuang Ching Hall | ㉔ Science Bldg. II |
| ⑥ Administration Bldg. | ⑮ Architecture Bldg. | ㉔ Engineering Bldg. | ㉕ Chang Ching Yu Memorial Library |
| ⑦ Cross Tower | ⑯ Yu Sheng Hall | ㉕ Commercial Design Bldg. | ㉖ Holistic Education Village |
| ⑧ Luh Hwa Hall | ⑰ Motorcycle Parking Lot | ㉖ Information Management Bldg. | ㉖ Student Center |
| ⑨ Chen Chih Hall | ⑱ Design Bldg. | ㉗ Management Bldg. | ㉗ Bioscience & Technology Bldg. |

B 校區
Campus

- | | |
|---|----------------|
| ㉘ Swimming Pool | ㉘ Jen Ai Hall |
| ㉘ Li Hsing Hall | ㉘ Skating Rink |
| ㉘ Gymnasium | ㉘ Sports Park |
| ㉘ Hsi Le Hall | |
| ㉘ Dept. of Commercial Design
(Product Design Division) | |
| ㉘ Jen Nai Hall | |
| ㉘ Ho Ping Hall | |

C 校區
Campus

- | | |
|--|---|
| ㉘ Membrane Research Center | ㉘ Re Cheng Hall B |
| ㉘ Hsin Shih Hall | ㉘ Re Cheng Hall C |
| ㉘ Electric Power Supply Center | ㉘ Innovation Pilot Center for
Theory in Practice |
| ㉘ Parking Lot No.1 | |
| ㉘ Waste Water Treatment | |
| ㉘ Hsin Chung Pei Water Purification Site | |
| ㉘ Membrane Research Center | |
| ㉘ Re Cheng Hall A | |

Educational Purpose

Chung Yuan Christian University was founded on the basis of Christ's love for the world, and is dedicated to higher education in China with faith, hope, and love. We aim to pursue true knowledge and action, and to serve mankind by inspiring culture.

Educational Philosophy

We respect the dignity of nature and humanity, seek harmony between the human and the natural, and use our technological and humanistic expertise with wisdom and discretion for the benefit of all people.

We understand that each person is endowed with different talents and has different personalities, abilities, and circumstances, so that the full realization of one's potential is success.

We believe that education is not only a way to explore knowledge and skills, but also a process of building character and pursuing the meaning of one's life

We believe that love is the guiding force in education, and we are willing to teach by example and with mutual love and respect as teachers and students pursue growth together.

We respect academic freedom and autonomy, and believe that knowledge leads to understanding and understanding leads to freedom.

We believe in the practice of a pragmatic approach to education as a means of seeking true knowledge.

We take pride in the school spirit of reverence for God, love for country, dedication to work, and Advocate to simplicity.

**The light of students is visible to teachers, the light of teacher is visible to God,
and the light of alumni is visible to the world.**



320314桃園市中壢區中北路200號

No.200, Zhongbei Rd., Zhongli Dist., Taoyuan City 320314, Taiwan (R.O.C.)

TEL : 03-265-9999

FAX: 03-265-8888

Curriculum and Registration Division 03-2652021~2028 Administration and services center 03-2651177~1181

Student Advising Division 03-2652111

Designer LI-TING LIN

Print in January,2024